

GP111 Antibody (Center)
Affinity Purified Rabbit Polyclonal Antibody (Pab)
Catalog # AP12583c

Specification

GP111 Antibody (Center) - Product Information

Application	IHC-P, WB,E
Primary Accession	Q8IZF7
Reactivity	Human
Host	Rabbit
Clonality	Polyclonal
Isotype	Rabbit IgG
Calculated MW	78569
Antigen Region	366-393

GP111 Antibody (Center) - Additional Information

Other Names

Probable G-protein coupled receptor 111, G-protein coupled receptor PGR20, GPR111, PGR20

Target/Specificity

This GP111 antibody is generated from rabbits immunized with a KLH conjugated synthetic peptide between 366-393 amino acids from the Central region of human GP111.

Dilution

IHC-P~~1:10~50

WB~~1:1000

E~~Use at an assay dependent concentration.

Format

Purified polyclonal antibody supplied in PBS with 0.09% (W/V) sodium azide. This antibody is purified through a protein A column, followed by peptide affinity purification.

Storage

Maintain refrigerated at 2-8°C for up to 2 weeks. For long term storage store at -20°C in small aliquots to prevent freeze-thaw cycles.

Precautions

GP111 Antibody (Center) is for research use only and not for use in diagnostic or therapeutic procedures.

GP111 Antibody (Center) - Protein Information

Name ADGRF2P ([HGNC:18991](#))

Synonyms ADGRF2, GPR111, PGR20

Function Orphan receptor.

Cellular Location

Membrane; Multi-pass membrane protein

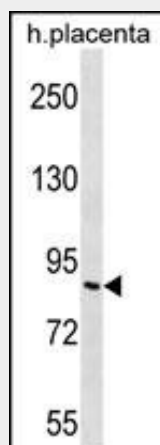
Tissue Location

High expression in kidney. Up-regulated in lung adenocarcinomas and prostate cancers.

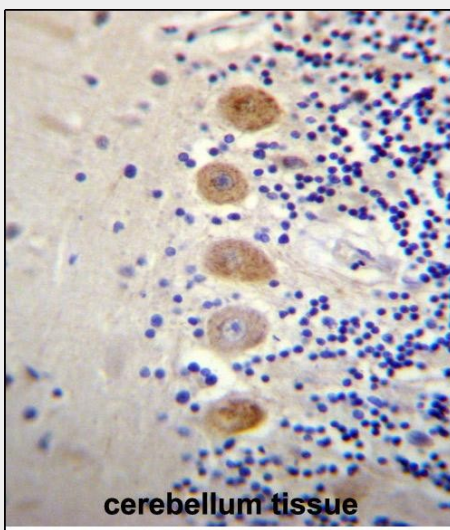
GP111 Antibody (Center) - Protocols

Provided below are standard protocols that you may find useful for product applications.

- [Western Blot](#)
- [Blocking Peptides](#)
- [Dot Blot](#)
- [Immunohistochemistry](#)
- [Immunofluorescence](#)
- [Immunoprecipitation](#)
- [Flow Cytometry](#)
- [Cell Culture](#)

GP111 Antibody (Center) - Images

GP111 Antibody (Center) (Cat. #AP12583c) western blot analysis in human placenta tissue lysates (35ug/lane). This demonstrates the GP111 antibody detected the GP111 protein (arrow).



GP111 Antibody (Center) (Cat. #AP12583c) immunohistochemistry analysis in formalin fixed and paraffin embedded human cerebellum tissue followed by peroxidase conjugation of the secondary antibody and DAB staining. This data demonstrates the use of GP111 Antibody (Center) for immunohistochemistry. Clinical relevance has not been evaluated.

GP111 Antibody (Center) - Background

GP111 is an orphan receptor.